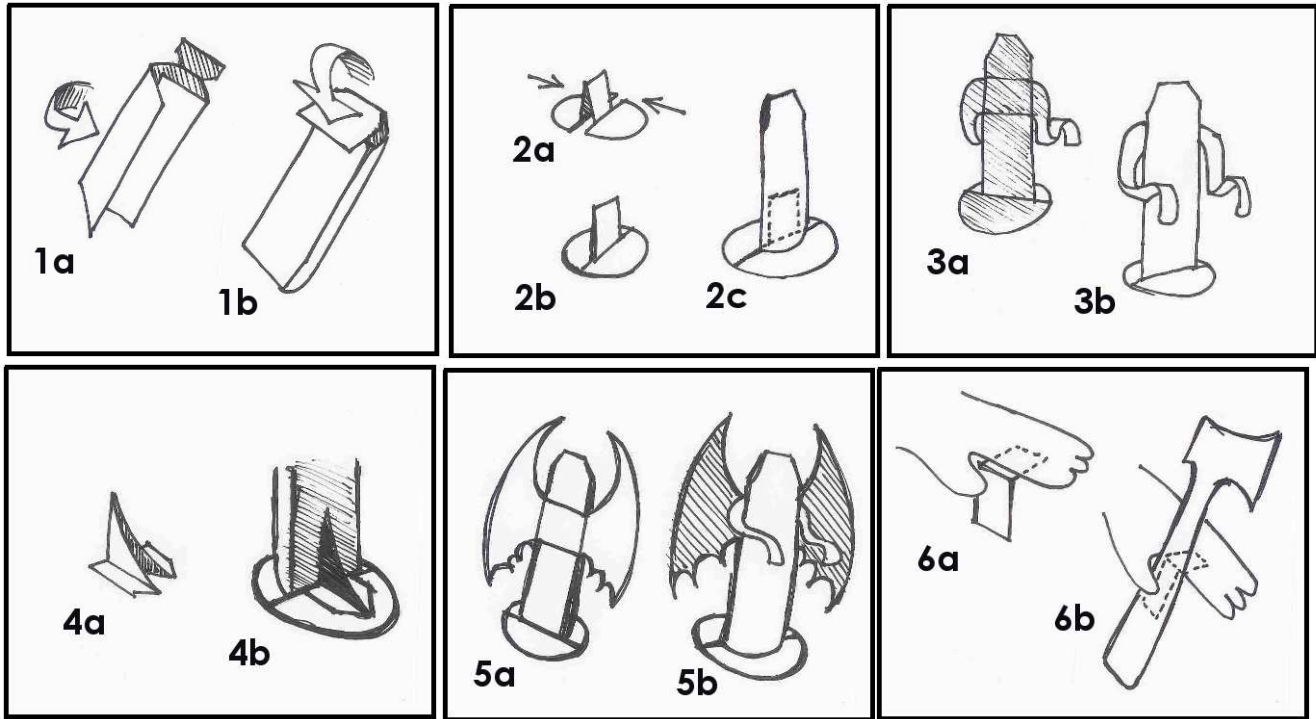


## MONSTER SET 2 - Assembly Instructions Page One.

(For The Countess, Dr. Goodendead, and Dr. Goodendead's Monster)



Begin by cutting out the body section. Don't separate the panels, just snip out the entire piece. Fold the back panel and the blank panel along the black lines. Smear some glue on the back of the back panel and glue it directly on top of the blank panel, allowing the front panel to curve slightly as shown in figure 1a. Next fold the top panel back along the black line and glue it over the back of the head as shown in figure 1b. You should now have a hollow body with a flat back and a curved front.

Next snip out the base piece. Fold the two half circles upward and then lay them flat and slide them together as shown in figure 2a. While holding them flat, press the two middle squares together and crease the top edge. Be sure the base sits flat on your tabletop, and then glue the two squares together. Cut out the large black square, place it face down, and glue the base on top of it. This will strengthen the base greatly, and will also make the finished model look more...well, you know...finished. Cut away the extra paper around the bottom circle to finish the piece. The base should now resemble figure 2b. Slide the base into the body and glue it to the inside **BACK** of the body section as shown in figure 2c. The monster's body should now stand upright.

Cut out the arm section along the outer red lines. Fold the two halves together along the black center line. Smear glue between the two halves and glue them together. Then carefully cut away the white area around the arms, being careful not to cut off the monster's fingers (or your own). Place the finished arm piece in position, and glue to the back of the monster as shown in figure 3a. Carefully curve (don't crease) the arms upward at the elbows and downward at the wrists and knuckles. And that completes Dr. Goodendead and his Monster! The countess, however, will still require her wings...

## MONSTER SET 2 - Assembly Instructions Page Two.

Since the wings are a bit heavy, we'll strengthen the Countess by adding a small brace to the back of her base. Snip out the triangular piece and cut along the small red line to separate the tabs. Fold the tabs up and then fold the two sides together along the blue line to form a shape like the one in figure 4a. Place it against the back of the body section and glue it to the base as shown in figure 4b. The body should now be braced securely enough to support the wings.

Cut out the wing piece around the outer red lines and then fold in half along the black center line. Glue the two halves together and then cut away the white area around the wings. Place the finished wings in position and glue them to the back of the body as shown in figures 5a and 5b. You can curve them if you wish, and the Countess is now ready to take flight!

(Secret Tip: The wings can also be used on Count Yargle from Monster Set 1. Just flip 'em around so the black center panel faces outward.)

Of course our little creatures will need something to keep them occupied, so each monster has an accessory item included. The Countess's Candelabra is built just like the base we made earlier. Cut along the red outer lines and around the outside of the half circles. Fold the half circles up, lay them flat and slide them together, creasing the top edge of the piece as shown in figure 2a. Snip out the small black square, lay it face down, and glue the Candelabra over it. Then cut away the extra paper around the bottom circle. Finish by cutting away the white area around the item, and your Candelabra is complete. For Dr. Goodendead's saw or his Monster's torch, just cut along the outer red lines, fold along the center black line, and glue the two sides together. Then carefully cut away the white area to finish the piece.

Each accessory also has a small blue tab to permanently attach it to the monster's hand, if you wish to do so. Cut out the blue tab and fold it in the middle. Glue one side to the bottom of the monster's hand so that the other side extends downward from the edge of the monster's pointer finger, as shown in figure 6a. Place the accessory against the tab and glue in place, as shown in figure 6b.

And there you have it! Your monster is ready to go play now.