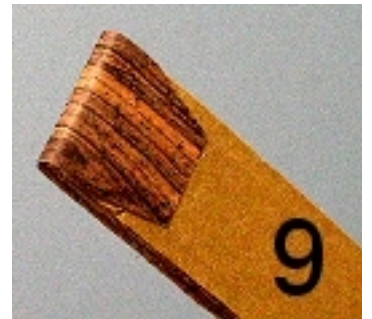
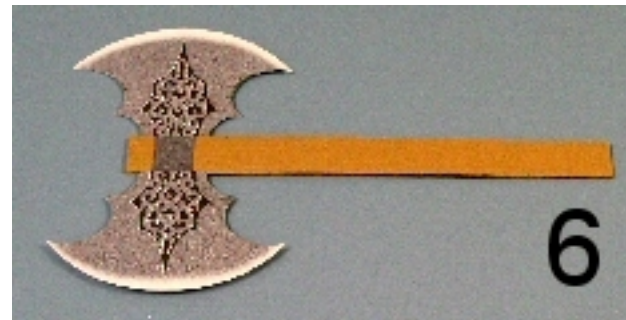
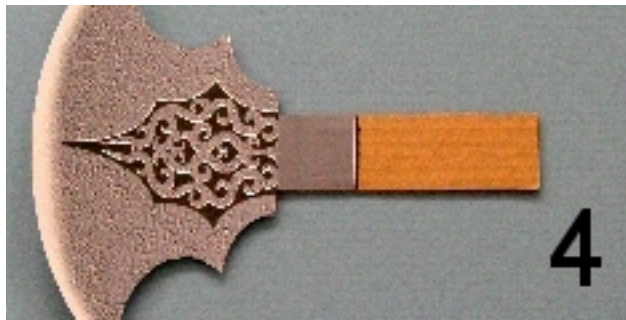
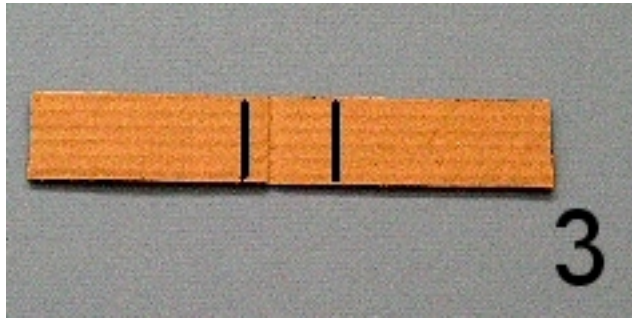
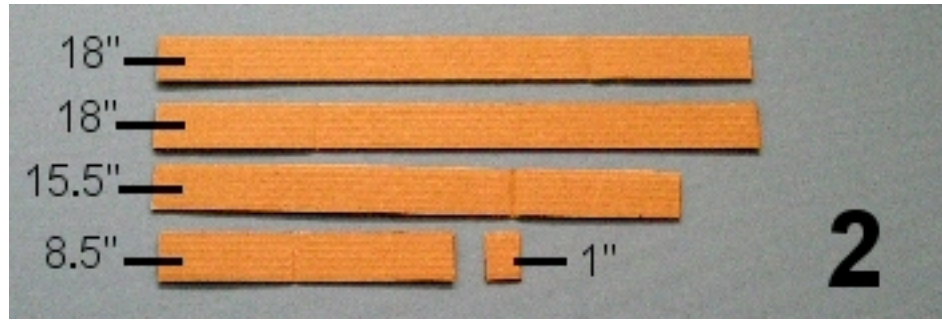
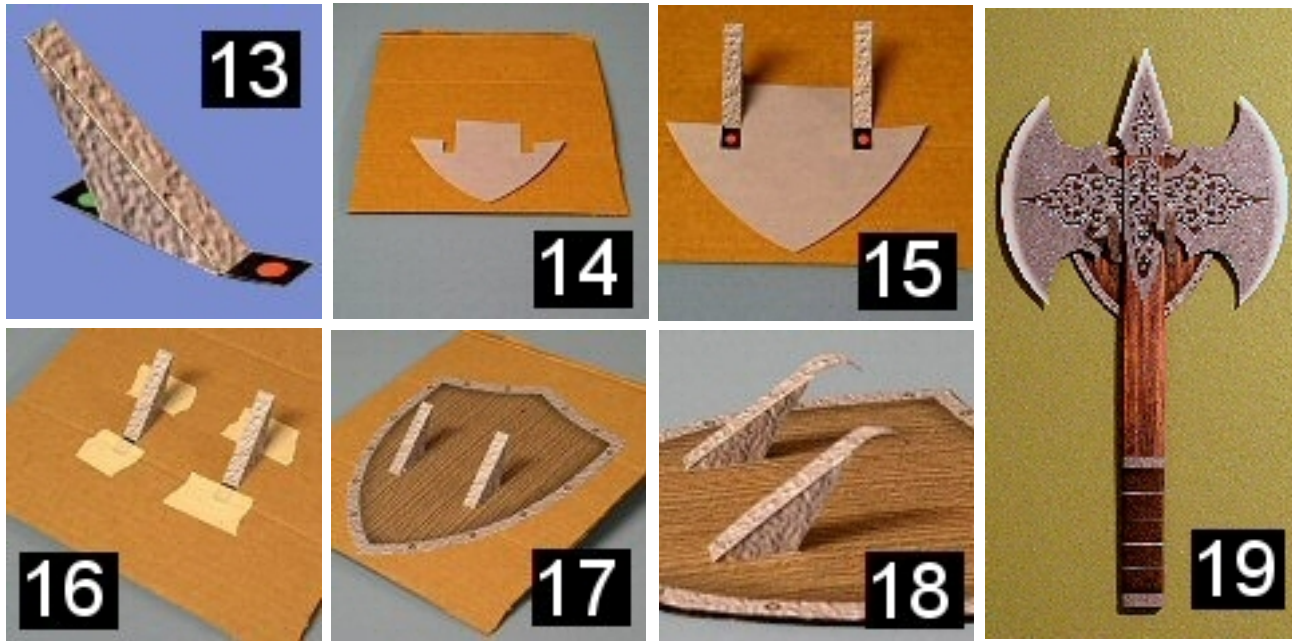


**THE BATTLE AXE** Assembly Instructions Page 1.



(Continued on next page)

## THE BATTLE AXE Assembly Instructions Page 2.



**WHAT YOU'LL NEED:** Scissors, tape (of any kind), a pen or pencil, a large black marker, a ruler, glue (or a glue stick), and some corrugated cardboard. A utility knife is recommended for cutting the cardboard. Card stock is best for printing out the parts pages (plain paper tends to wrinkle when glued).

### AXE ASSEMBLY:

Be sure you have CORRUGATED cardboard as shown in Figure 1. We'll be cutting five strips, each ONE AND A HALF INCHES wide. The strips should be cut WITH the grain of the cardboard. This means the finished strips should have smooth grooves along the sides and 'wavy' cardboard on the ends, as shown in Figure 1 (this is important for making the axe sturdy).

Make two EIGHTEEN INCH strips, one FIFTEEN AND A HALF INCH strip, one EIGHT AND A HALF INCH strip and one ONE INCH strip, as shown in Figure 2. If your cardboard isn't long enough, it's OK to join several pieces together to make a strip as long as no seams or folds are lined up when we layer the strips.

Cut out the BLADE SPACER on Parts Page 1 and use it to make two marks on the 8.5 inch piece, each mark being 3.5 inches from the edge. This will leave a 1.5 inch square in the center of the 8.5 inch piece, as shown in Figure 3. Flip the 8.5 inch piece over and mark the opposite side in the same manner.

Cut out BLADE A on Parts Page 1 and BLADE B on Parts Page 2. Glue the blank grey tab on BLADE A directly over the square we marked in the center of the 8.5 inch piece, as shown in Figure 4. Glue the square tab on BLADE B directly over the grey tab on BLADE A, as shown in Figure 5.

Flip the piece over. Cut out BLADE C on Parts Page 3 and BLADE D on Parts Page 4. Connect blades C and D to the 8.5 inch cardboard piece in the same manner as blades A and B. Then smear plenty of glue along the outer edges of the unprinted sides of the blades and glue the blades together. Trim as needed.

Now glue the 15.5 inch piece, the axe blade and the 1 inch piece directly over one of the 18 inch pieces, as shown in Figure 6. To prevent the cardboard end from showing later, cut out one of the TOP COVERS on Parts Page 4, fold it over the top end of the cardboard as shown in Figure 7, and glue it in place. (Be sure the top cover doesn't extend beyond the sides of the cardboard.)

Cut out the two SPIKES on Parts Page 5, glue them back to back and trim as needed. Position the finished SPIKE over the blade and 1 inch piece, as shown in Figure 8, and glue in place.

Cut out the remaining TOP COVER on Parts Page 4, fold it over one end of the remaining 18 inch piece, and glue it in place. Now glue the 18 inch piece to the dark area at the base of the spike, and to the 15.5 inch cardboard piece.

Cut out the BOTTOM COVER on Parts Page 4 and glue it over the bottom of the axe handle, as shown in Figure 9. Again, be sure the cover doesn't extend beyond the sides of the cardboard.

(Continued on next page)

## THE BATTLE AXE Assembly Instructions Page 3.

Cut out one of the WRAPPERS on Parts Page 7. Wrap it around the top of the axe handle as shown in Figure 10 and glue it in place.

Now cut out HANDLE A on Parts Page 6 and HANDLE B on Parts Page 7. Glue the bottom edge of HANDLE A directly over the wooden panel on HANDLE B. Wrap the paper handle around the cardboard as shown in Figure 11 and glue in place. (The paper handle should reach the bottom edge of the blade, but if not then cut out the remaining WRAPPER and wrap it below the blade to fill the gap.)

To finish the battle axe, cut out PLATE A on Parts Page 3 and PLATE B on Parts Page 4. Glue one plate to each side of the axe, lining the plates up with the top of the handle as shown in Figure 12. Your battle axe is now complete!

### DISPLAY PLAQUE ASSEMBLY:

For the display plaque, you'll need a piece of corrugated cardboard measuring at least 8 X 9 inches.

(FOLDING TIP: It's helpful to 'score' the fold lines before folding. You can use an old ink pen, a knitting needle, the end of a paper clip, or any metal object that will crease the paper without tearing it. Scoring will help you fold much more precisely.)

Cut out the two PRONGS on Parts Page 9. For each prong : Fold the end tabs with dots UPWARD. Fold DOWNWARD along the center line (indicated with green triangles). Then fold all four triangular panels DOWNWARD. Glue the black panels to the back of the adjacent gray panels, forming a prong like the one shown in Figure 13.

Cut out the PRONG GUIDE on Parts Page 9. Place the PRONG GUIDE near the bottom of the piece of cardboard as shown in Figure 14. (It may be helpful to trace the outline of the guide onto the cardboard.) Place the prongs on the cardboard as shown in Figure 15. The prong tabs with red dots should sit in the prong guide notches. The sides of the prongs should line up with the middle part of the prong guide. After both prongs are in position, tape each prong's upper tabs (with green dots) to the cardboard. Remove the prong guide. Then place tape over the bottom tabs (with red dots) as shown in Figure 16.

Cut out the PLAQUE FRONT on Parts Page 8. Cut out the two white rectangles in the PLAQUE FRONT (you may want to use a small utility knife for this). Carefully slide the PLAQUE FRONT down over the two prongs and flatten the PLAQUE FRONT against the cardboard, as shown in Figure 17. Glue the PLAQUE FRONT down and then cut the plaque out of the piece of cardboard. Use the black marker to darken the edges of the cardboard.

Cut out the two PRONG FRONTS on Parts Page 9. For each prong: fold DOWNWARD along the center line and glue the two sides together. Trim if needed. Place a PRONG FRONT over the front edge of each prong and glue the untextured side of each PRONG FRONT to the prongs. Gently curve the two pointed tips around a pencil to make curved prongs as shown in Figure 18.

The mounting plaque can now be hung on a wall with tape or a thumb tack. Hang the axe on the plaque as shown in Figure 19. You may now stand back and gaze in satisfaction at your new battle axe display.

**NOTE: Never swing your battle axe at another person . Even a paper weapon can do accidental damage.**

**(And then the fearsome warrior who originally wielded this axe would have to come back and haunt you for all eternity. Better to let him rest in peace, wouldn't you say?)**