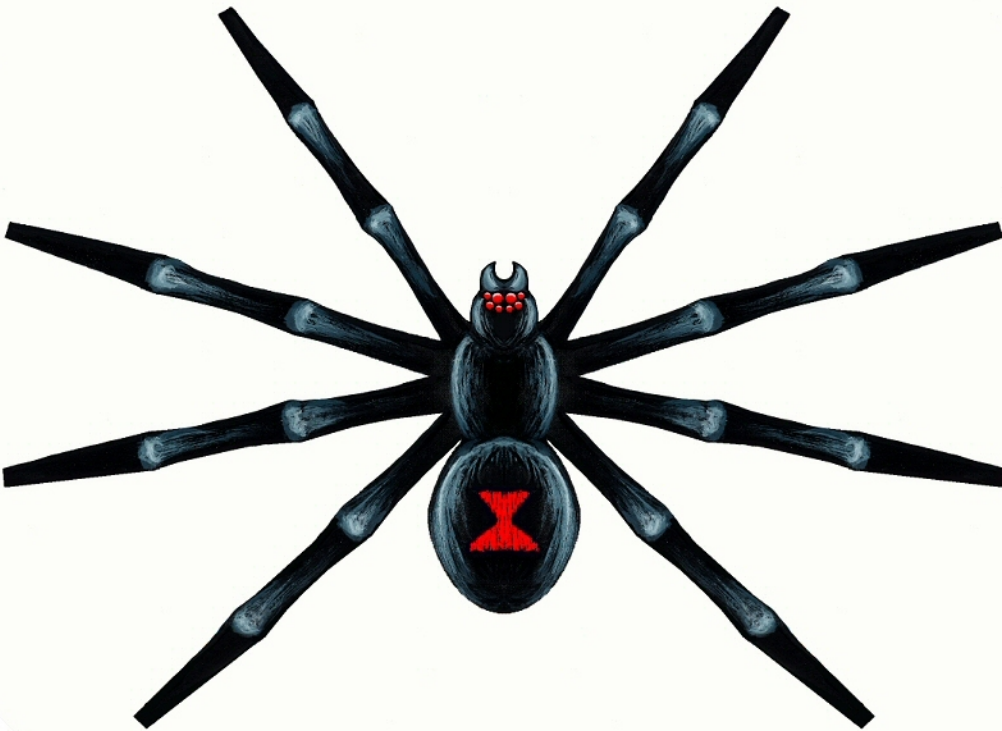
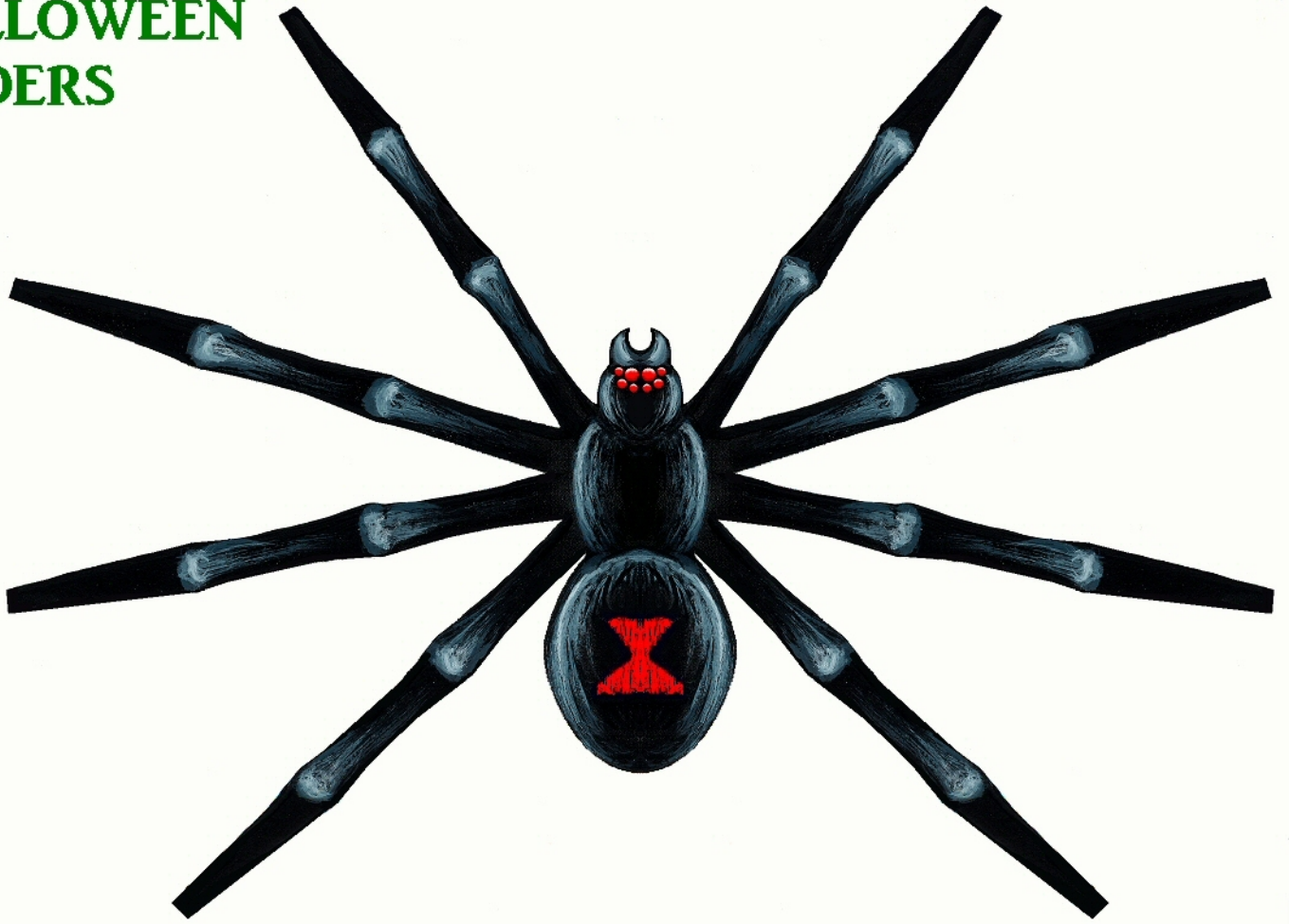


HALLOWEEN SPIDERS

Copyright 2015 by Ray O'Bannon



INSTRUCTIONS ON NEXT PAGE...

SPIDER ASSEMBLY INSTRUCTIONS:

Print out the Spiders and let the ink dry completely. Cut out a spider. Curve the body slightly by folding it over a pen or pencil. Bend the legs slightly upward where they join the body. Then fold sharply downward at each leg joint. Straighten the legs back out and pose as shown below.



For an extra fancy spider, use a black marker to darken the unprinted side of the lower leg sections. You can also turn the spider upside down and trace around it with a black marker to darken the paper edges.