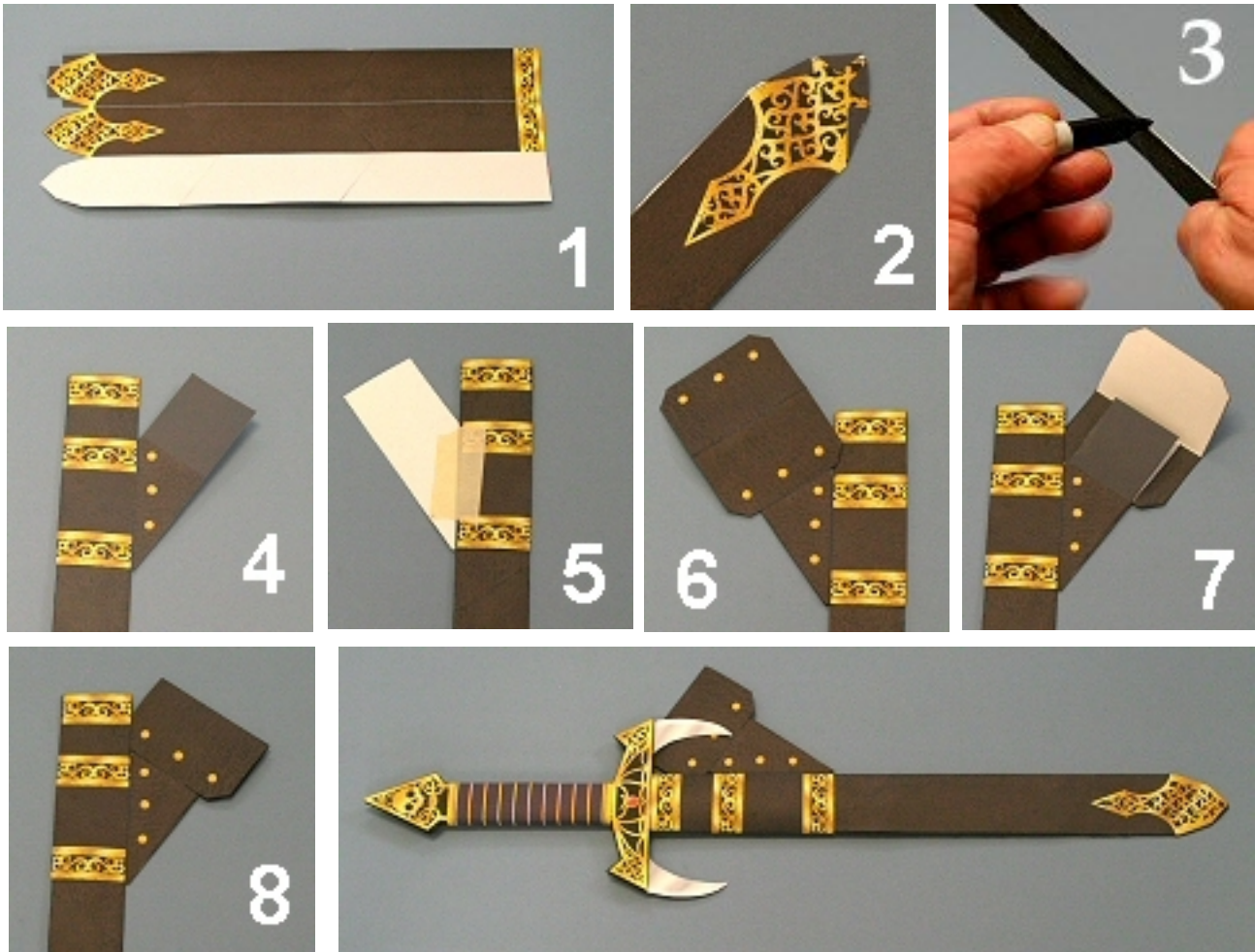


VAMPIRE SWORD SCABBARD Assembly Instructions Page 1.



WHAT YOU'LL NEED: Scissors, tape (any kind will work), a ruler, glue (or a glue stick), and a black marker. The parts pages should be printed on card stock.

FOLDING TIP: It's helpful to 'score' the fold lines before folding. You can use an old ink pen, a knitting needle, the end of a paper clip, or any metal object that will crease the paper without tearing it. Scoring will help you fold much more precisely.

ASSEMBLY:

(The following three pieces should be cut and folded as precisely as possible, so the long fold lines remain straight.) Begin by cutting out SECTION A, B, and C (on parts pages 1, 2, and 3). Use the black marker to darken the white paper edges of each piece (by laying the marker sideways on the edge or by placing the piece face down and tracing around it).

Glue the top of SECTION B over the gray area at the bottom of SECTION A (with yellow dots). Glue the top of SECTION C over the gray area at the bottom of SECTION B (with green dots). The scabbard should now resemble Figure 1.

Fold the gray panel DOWNWARD and then fold DOWNWARD between the two leather panels, folding along the blue line. Fold the gray panel flat against the unprinted side of the center leather panel (but do NOT glue them together). Fold the outer leather panel down over the gray panel and glue the outer leather panel to the gray panel.

There are four dark gray tabs at the end of the scabbard. Fold these DOWNWARD and glue them to the opposite side, as shown in Figure 2. Then cut out the TIP on Parts Page 3 and glue it over the dark gray tabs.

Lay the tip of the black marker against the scabbard's folded edges as shown in Figure 3 and slide over the edges to darken them. You can now slide the sword into the sheath. It should fit snugly.

(Continued on next page...)

VAMPIRE SWORD SCABBARD Assembly Instructions Page 2.

The leather device that holds a sword on one's belt is called a 'frog'. To add a frog to your scabbard, cut out FROG A on Parts Page 4. Fold UPWARD between the decorated rectangular panel and the triangular panel. Use the marker to remove the blue line. Fold the blank dark gray tab UPWARD. Line up the folded edge with the side of the scabbard and glue the rectangular panel to the scabbard about two inches from the top, wrapping the decorated rectangular panel around both sides of the scabbard as shown in Figure 4.

Turn the scabbard over and place tape as shown in Figure 5. This edge is where the frog will try to rip so use several pieces of tape to strengthen this area. After applying the tape, cut out FROG B on Parts Page 5 and glue it to the unprinted side of the matching panels on FROG A. Trim as needed. Don't worry about the tape showing, we'll hide it in a minute.

To finish the frog, cut out the BELT LOOP on Parts Page 5. The two large panels will form a belt loop so fold DOWNWARD between them but do NOT glue them together. Fold UPWARD on both sides of the triangular panel. Use the marker to remove the blue lines. Glue the triangular panel to the matching panel on the frog. Glue the decorated panel directly over the matching panel on the scabbard to hide the tape. **DO NOT** glue the larger panel to the blank gray area. The frog should now resemble Figure 6.

Turn the scabbard over. Cut out the two LOOP LINERS on Parts Page 5 and glue them over the white areas inside the belt loop, as shown in Figure 7 Trim as needed and then fold the dark gray panel UPWARD..

Place glue on the gray panel and glue the upper belt loop panel down over it, as shown in Figure 8. You should now be able to carefully slide a belt between the gray panel and the back panel of the frog.

Your scabbard is now complete. Slide your sword into it's new home, hang the scabbard from your belt and let your adventures begin!